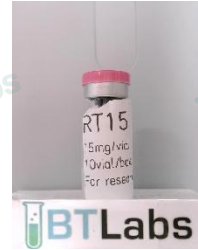




Title:

Certificate of Analysis (CoA)

Date: 6/12/2026
Date Tested: 6/8/2026
Customer: Lumira
Testing material: Retatrutide
Lot Number: WL-RT15-00521
BT Sample ID: 005000040403824
Labeled Peptide Content/Potency: 15 mg
Storage: R.T.
Visual Description: Small clear vial: white sample, white label, silver crimp, pink plastic cap.
Labeled as: Retatrutide
Manufacturer: Lumira
Testing Purpose: FTIR and HPLC analysis for the identification, purity, potency and composition of a peptide product. It does not provide information on particulate matter, microbial contamination or presence of endotoxins.



Test	Method	Specification	Result
General Appearance	USP <630>	white powder	white powder
Mass	USP <41>	As recorded	60 mg
FTIR Identification and Composition Analysis	USP <197A>	Sample spectrum should confirm the content of peptide via characteristic bands	FTIR sample spectrum confirms the presence of Retatrutide with addition of excipient(s)/fillers.
HPLC Purity of Peptide Assay	USP <621>	Specifications: $\geq 98\%$	99.6 %
HPLC Potency Assay	USP <621>	Specifications: 90 – 110% of 15 mg	15.3 mg (101.8 %)
Peptide-to-Excipients Ratio	USP <1151>	Recommended ratios of (1:2) to (1:10) for (peptide: excipients)	15.3 : 44.7 mg (1:2.9)

The results of the CoA relate only to the item(s) tested and applied to the sample as received.



Andrea Castro, AS
Scientist-II
BTLabs



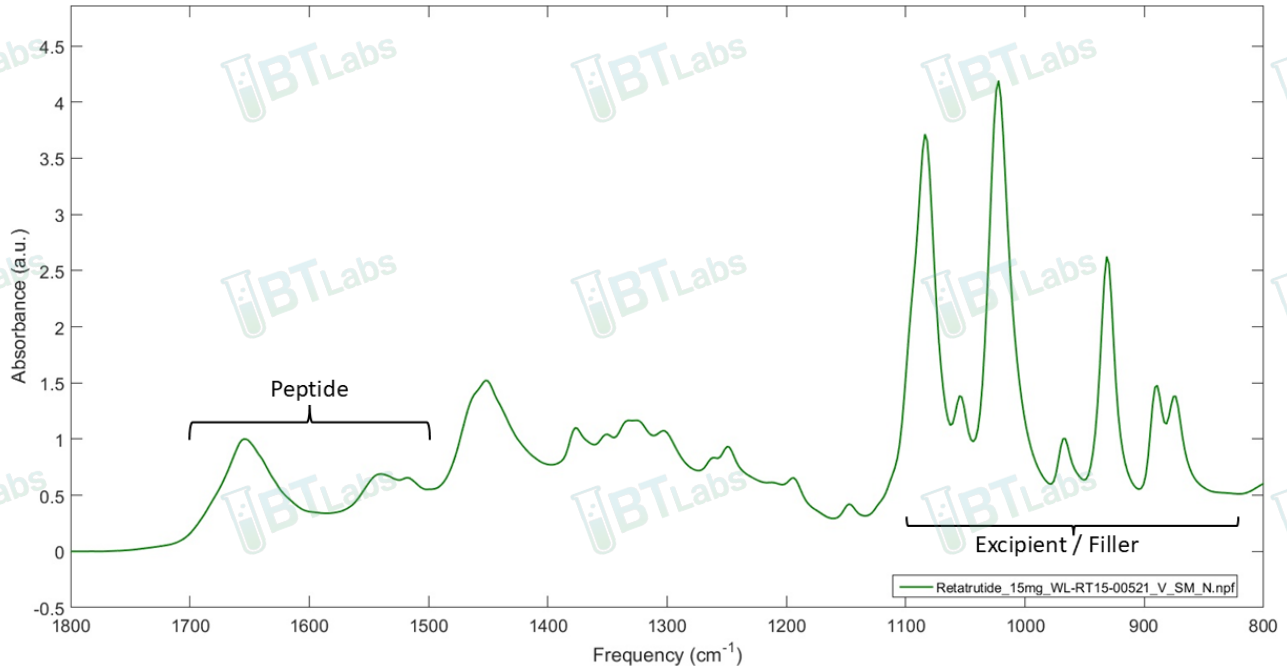
Verna Zheng, AS
Scientist-II
BTLabs



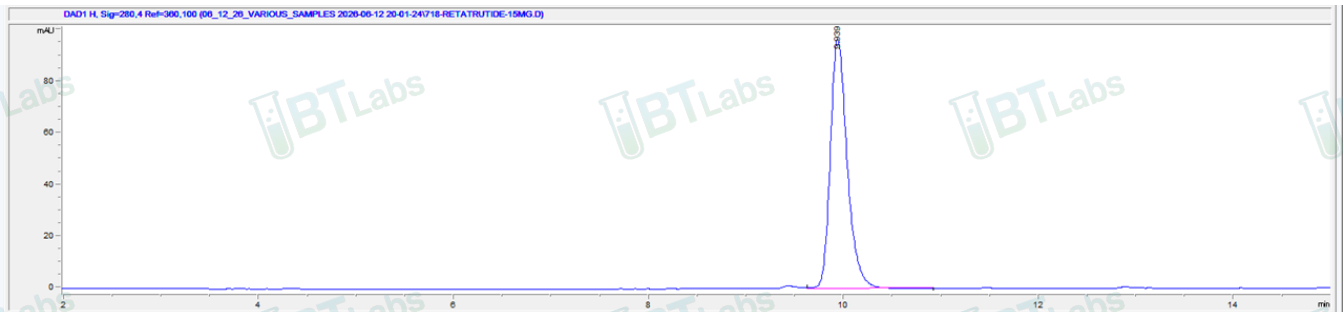
Title:

Certificate of Analysis (CoA)

FTIR ID and Composition Analysis: Retatrutide Lot WL-RT15-00521



HPLC Purity and Potency Assay @ 280 nm: Retatrutide Lot WL-RT15-00521



Retatrutide Lot WL-RT15-00521 @ 280 nm

Peak #:	Retention Time (min)	Area (mAU*s)
1	9.939	1164.2