



Title:

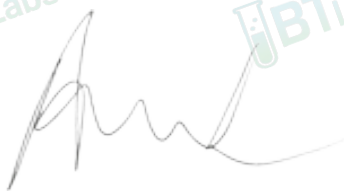
## Certificate of Analysis (CoA)

**Date:** 6/12/2026  
**Date Tested:** 6/8/2026  
**Customer:** Lumira  
**Testing material:** GLOW  
**Lot Number:** WL-GLOW-P00520  
**BT Sample ID:** 005000040403821  
**Labeled Peptide Content/Potency:** 70 mg  
**Storage:** R.T.  
**Visual Description:** Small clear vial: purple sample, white label, silver crimp, white plastic cap.  
**Labeled as:** GLOW  
**Manufacturer:** Lumira  
**Testing Purpose:** FTIR and HPLC analysis for the identification, purity, potency and composition of a peptide product. It does not provide information on particulate matter, microbial contamination or presence of endotoxins.



Test	Method	Specification	Result
General Appearance	USP <630>	purple powder	purple powder
Mass	USP <41>	As recorded	135.1 mg
FTIR Identification and Composition Analysis	USP <197A>	Sample spectrum should confirm the content of peptide via characteristic bands	FTIR sample spectrum confirms the presence of GLOW with addition of excipient(s)/fillers.
HPLC Purity of Peptide Assay	USP <621>	Specifications: $\geq 98\%$	99.7 %
HPLC Potency Assay	USP <621>	Specifications: 90 – 110% of 70 mg	GHK-Cu 45.6 mg (65.1 %) TB-500-Frg 12.5 mg (17.9 %) BPC-157 13.4 mg (19.2 %)
Peptide-to-Excipients Ratio	USP <1151>	Recommended ratios of (1:2) to (1:10) for (peptide: excipients)	71.6 : 63.5 mg (1:0.9)

The results of the CoA relate only to the item(s) tested and applied to the sample as received.



Andrea Castro, AS  
Scientist-II  
BTLabs



Verna Zheng, AS  
Scientist-II  
BTLabs

5730 Corporate Way | Suite 220 | West Palm Beach, FL 33407  
Phone: (561) 625-0133

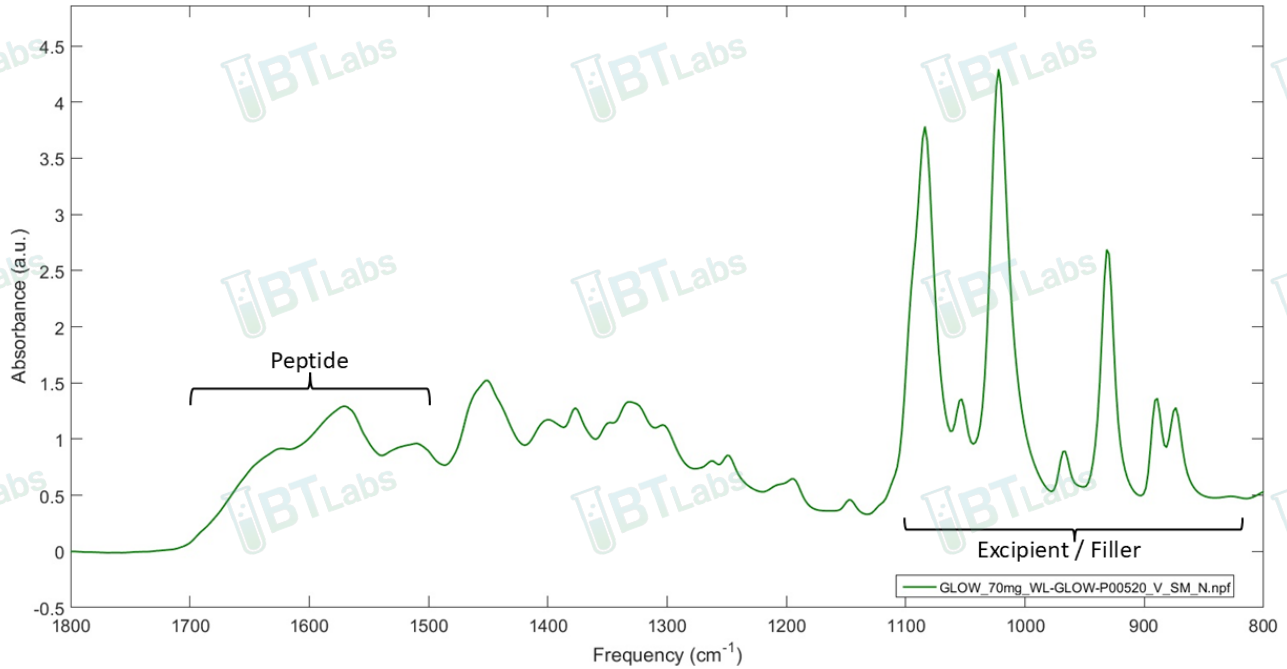
E-mail: [info@btlabtesting.com](mailto:info@btlabtesting.com) | Website: <https://btlabtesting.com>



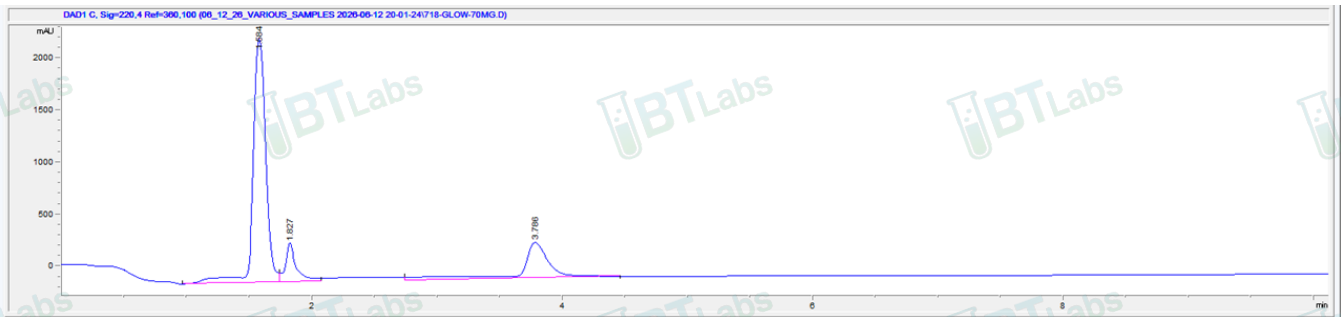
Title:

## Certificate of Analysis (CoA)

### FTIR ID and Composition Analysis: GLOW Lot WL-GLOW-P00520



### HPLC Purity and Potency Assay @ 220 nm: GLOW Lot WL-GLOW-P00520



#### **BPC-157 GHK-Cu TB-500 Lot WL-GLOW-P00520 @ 220 nm**

Peak #:	Retention Time (min)	Area (mAU*s)
1	1.584	16536.5
2	1.827	3209.9
3	3.786	5209.9

5730 Corporate Way | Suite 220 | West Palm Beach, FL 33407  
Phone: (561) 625-0133

E-mail: [info@btlabtesting.com](mailto:info@btlabtesting.com) | Website: <https://btlabtesting.com>