

Finnrick Analytics  
 Finnrick.com  
 Austin, TX

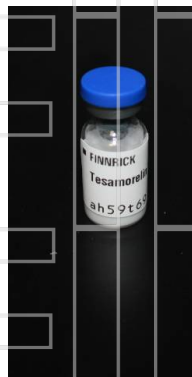


**Project** 135393  
**Lab #** 129652  
**Date Rec'd** 10/14/2025  
**Report Issued** 10/23/2025

**Project**  
**Sample**

Tesamorelin 10 mg ah59t69

### Certificate of Analysis



<u>Analyte</u>	<u>Result</u>	<u>LOQ</u>	<u>Units</u>	<u>Method</u>	<u>Date</u>	<u>% of Label</u>
<b>Peptide Analysis</b>						
Chromatographic purity	>99.95	0.5	%	HPLC-UV/MS	10/22/2025	
Total peptide mass	8.11	0.5	mg	HPLC-UV/MS	10/22/2025	81.1
Tesamorelin	ID Confirmed			HPLC-UV-MS	10/22/2025	

Safer.

The data presented are from the analysis of the sample shown and meet Krause Analytical internal quality assurance criteria unless otherwise flagged. Methods shown reference current Krause Analytical SOPs  
 ND - Not detected LOQ - limit of quantification  
 Copyright © 2025 Krause Analytical LLC. All rights reserved.

Respectfully submitted,

Mark C. Krause  
 Laboratory Director

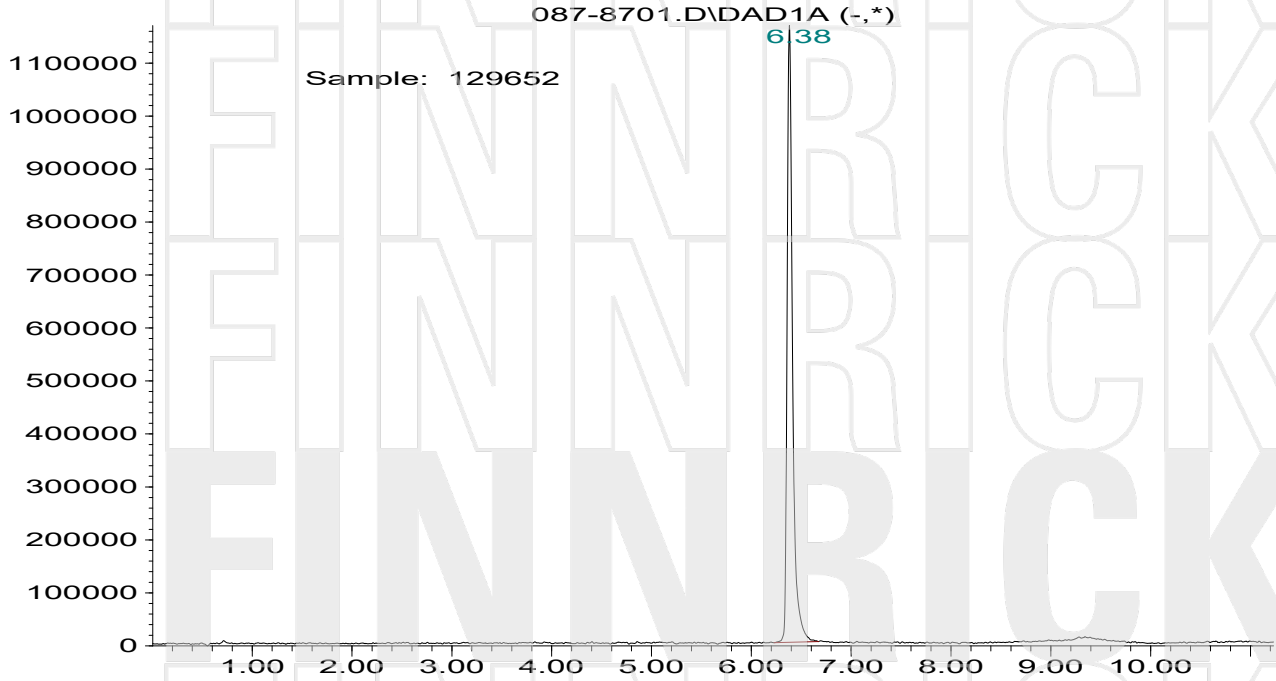
8127 Mesa Drive Suite B-206 Austin, TX 78759



**krause analytical**

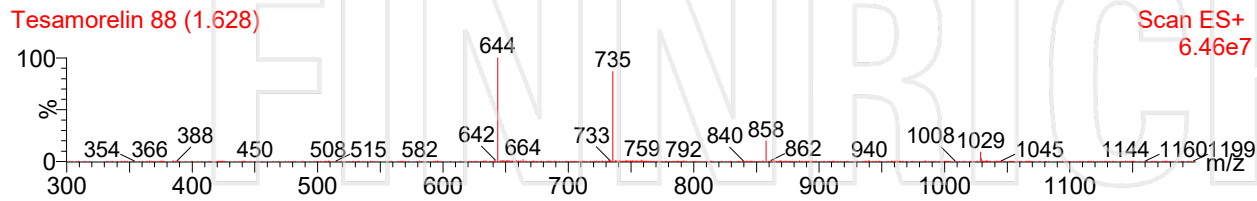
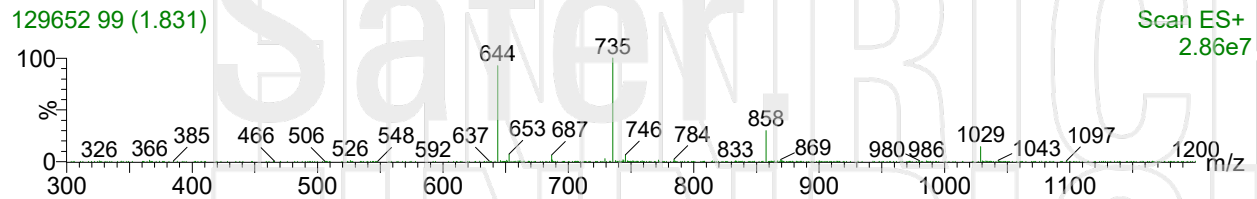
### Chromatogram

Response\_



Time

### Mass spectrum/Reference Spectrum



**Krause Analytical, LLC 8127 Mesa Drive Suite B-206 Austin, TX 78759 [info@krauseanalytical.com](mailto:info@krauseanalytical.com)**